

# 2022 Summary of Benefits

Lincoln Electric

Humana®



Relationships are built on trust. Respect for an individual's privacy goes a long way toward building trust. Humana values our relationship with you, and we take your personal privacy seriously. Humana's Notice of Privacy Practices outlines how Humana may use or disclose your personal and health information. It also tells how we protect this information. The notice provides an explanation of your rights concerning your information, including how you can access this information and how to limit access to your information. In addition, it provides instructions on how to file a privacy complaint with Humana or to exercise any of your rights regarding your information.

If you'd like a copy of Humana's Notice of Privacy Practices, you can request a copy by:

- Visiting **Humana.com** and clicking the Privacy Practices link at the bottom of the home page
- E-mailing us at [privacyoffice@humana.com](mailto:privacyoffice@humana.com)
- Sending a written request to:  
Humana Privacy Office  
P.O. Box 1438  
Louisville, KY 40202



# what's inside...

Throughout this booklet, you'll find lots of information to help you choose and use your plan:

- **know what you need**  
take a few minutes to find out what kind of healthcare coverage you want and need. thinking about how you'll use your plan is the first step in choosing with confidence.
- **explore your options**  
after finding out about your needs, it's time to see what fits them. the plan information in this section explains what's available to you, why you might want it, and how it works.
- **see all that Humana offers** Also included in this booklet are the resources and information that will show you all the ways that Humana is there for you in every aspect of your life.
- **choose and use your plan**  
now you're ready to roll – or enroll!

The Humana logo is written vertically in a bold, green, sans-serif font. The word "Humana" is oriented vertically, with the 'H' at the bottom and the 'a' at the top. A registered trademark symbol (®) is located at the top right of the 'a'.

# have a look...

## Use your HumanaDental benefits

The HumanaDental C Series dental plan has you covered for any circumstance. Whether you simply need quality routine dental care or unexpected dental treatment, you know what to expect with HumanaDental.

- › No waiting periods
- › No claims to file
- › No annual maximums

### Know what your plan covers

Attached is a summary of HumanaDental C Series plan benefits which are described in detail in your certificate. You can find your certificate at **HumanaDental.com** or call 1-800-979-4760. Here's what you can expect:

- › You have the freedom to select any participating dentist. To select a dental provider from our network, simply visit **HumanaDental.com**. Once there, you can also check your benefits, email us and get a new or temporary ID card. If you prefer, contact us at 1-800-979-4760.
- › Life without claim forms! With HumanaDental DHMO plan you pay your dentist directly, when applicable.
- › Your primary dentist will provide all of your routine dental care and any copayment or discounted charges will be paid at the time of service.
- › If you need a specialty dentist, you'll receive a 25 percent discount by using one of the participating specialty dentists from our network.

### Questions?

Check out [HumanaDental.com](http://HumanaDental.com)

Call 1-800-979-4760 anytime for the automated information line or 8 a.m. to 6 p.m. for a Customer Care specialist.

## Choose HumanaDental benefits

### Be healthy

Good oral health means more than just an attractive smile. Research shows that oral health, preventive care and regular visits to the dentist is integral to overall health. For example, the Academy of General Dentistry says there is a link between gum disease and heart problems, and the American Academy of Periodontology says severe gum disease can increase blood sugar, increasing the risk among diabetics. The HumanaDental DHMO plan enables you to take better care of your teeth, and you'll pay less doing so.

### Check your dental IQ anytime

Log on to **MyDentalIQ.com** and take the dental risk assessment that could help trim your total healthcare costs over time. Find out how you can improve your oral and overall health. The dental health risk assessment at **MyDentalIQ.com** takes minutes to complete, and immediately delivers a scorecard with health tips tailored to you.

# HumanaDental DHMO 250 C Plan

The HumanaDental DHMO plans focus on maintaining oral health, prevention and cost-containment. A member may see a primary care dentist as often as necessary. There are no yearly maximums, no deductibles to meet and no waiting periods. C plans copayments for listed procedures are applicable only at a participating general dentist.

Member costs listed here are for services provided by your chosen participating primary care dentist (PCD) only. As your dental professional, your PCD may decide that you need to see an contracted dental specialist. No referral is necessary to see a network specialist.

**Specialists services:** Should you need a specialist, (i.e., endodontist, oral surgeon, periodontist, pediatric dentist), you may be referred by your participating general dentist, or you may refer yourself to any participating specialist. For C plans and benefits for procedures not listed on the schedule, employees will receive a 25 percent discount by visiting a participating specialist.

## Summary of services

Appointments	member pays
D9310 Consultation (diagnostic service provided by dentist other than practitioner providing treatment)	\$ 20.00
D9430 Office visit (normal hours)	\$ 5.00
D9440 Office visit (after regularly scheduled hours)	\$ 35.00
D9999 Emergency visit during regularly scheduled hours, by report	\$ 20.00
D9999 Broken appointments (without 24 hr. notice, per 15 min)—maximum \$40 per broken appointment.	
No charge will be made due to emergencies.	\$ 10.00

Diagnostic	member pays
D0120 Periodic oral examination	no charge
D0140 Limited/comprehensive/detailed and extensive oral eval	no charge
D0150 Limited/comprehensive/detailed and extensive oral eval	no charge
D0160 Limited/comprehensive/detailed and extensive oral eval	no charge
D0180 Comprehensive periodontal evaluation.	\$ 15.00
D0210 X-ray intraoral—complete series including bitewings	no charge
D0220 X-ray intraoral—periapical, first film	no charge
D0230 X-ray intraoral—periapical, each additional film	no charge
D0270 X-ray bitewing—single film	no charge
D0272 X-ray bitewings—two films	no charge
D0274 Bitewings—four films	no charge
D0330 Panoramic film	no charge
D0460 Pulp vitality tests	no charge
D0470 Diagnostic casts	no charge

Preventive	member pays
D1110 Prophylaxis—adult, routine (once every 6 months)	no charge
D1120 Prophylaxis—child, routine (once every 6 months)	no charge
D1110 Prophylaxis—adult/child, (additional)	\$ 25.00
D1120 Prophylaxis—adult/child, (additional)	\$ 25.00
D1203 Topical application of fluoride (not including prophylaxis)—child (up to 16 years of age)	no charge
D1206 Topical fluoride varnish (for child <16)	no charge
D1330 Oral hygiene instruction	no charge
D1351 Sealant-per tooth	\$ 15.00
D1510 Space maintainer—fixed, unilateral	\$ 55.00+lab
D1515 Space maintainer—fixed, bilateral	\$ 55.00+lab
D1520 Space maintainer—removable, unilateral	\$ 95.00+lab
D1525 Space maintainer—removable, bilateral	\$ 95.00+lab
D1550 Recementation of space maintainer	\$ 15.00

Restorative	member pays
D2140 Amalgam—one surface, primary or permanent	\$ 20.00
D2150 Amalgam—two surfaces, primary or permanent	\$ 25.00
D2160 Amalgam—three surfaces, primary or permanent	\$ 30.00
D2161 Amalgam—four or more surfaces, primary or permanent.	\$ 40.00
D2940 Sedative filling	\$ 20.00
D2999 Sedative base (under fillings), by report	no charge

Resin restorative	member pays
D2330 Resin based composite—one surface, anterior	\$ 40.00
D2331 Resin based composite—two surfaces, anterior	\$ 45.00
D2332 Resin based composite—three surfaces, anterior	\$ 55.00
D2391 Resin based composite—one surface, posterior	\$ 70.00
D2392 Resin based composite—two surfaces, posterior	\$ 90.00
D2393 Resin based composite—three surfaces, posterior	\$ 110.00
D2394 Resin based composite—four or more surfaces, posterior	\$ 130.00
D2510 Inlay—metallic, one surface	\$ 115.00
D2520 Inlay—metallic, two surfaces	\$ 125.00
D2530 Inlay—metallic, three or more surfaces	\$ 150.00

Crown and bridge	member pays
D2740 Crown—porcelain/ceramic substrate	\$310.00+lab
D2750* Crown—porcelain fused to high noble metal	\$310.00
D2751 Crown—porcelain fused to predominantly base metal	\$310.00
D2752* Crown—porcelain fused to noble metal	\$310.00
D2790* Crown—full cast high noble metal	\$310.00
D2791 Crown—full cast predominantly base metal	\$310.00
D2792* Crown—full cast noble metal	\$310.00
D2910 Recement inlay	\$ 20.00
D2920 Recement crown	\$ 20.00
D2930 Prefabricated stainless steel crown—primary tooth	\$ 90.00
D2950 Core buildup, including any pins	\$ 50.00
D2951 Pin retention—per tooth, in addition to restoration	\$ 20.00
D2952 Cast post and core in addition to crown	\$100.00+lab
D2953 Each additional cast post—same tooth	\$100.00+lab
D2954 Prefabricated post and core in addition to crown	\$100.00
D2962 Labial veneer (porcelain laminate)—laboratory	\$310.00+lab

Prosthodontics (fixed)	member pays
D6210* Pontic—cast high noble metal	\$310.00
D6211 Pontic—cast predominantly base metal	\$310.00
D6212* Pontic—cast noble metal	\$310.00
D6240* Pontic—porcelain fused to high noble metal	\$310.00
D6241 Pontic—porcelain fused to predominantly base metal	\$310.00
D6242* Pontic—porcelain fused to noble metal	\$310.00

D6750*	Crown—porcelain fused to high noble metal	\$310.00
D6751	Crown—porcelain fused to predominantly base metal	\$310.00
D6752*	Crown—porcelain fused to noble metal	\$310.00
D6790*	Crown—full cast high noble metal	\$310.00
D6791	Crown—full cast predominantly base metal	\$310.00
D6792*	Crown—full cast noble metal	\$310.00
D6930	Recement fixed partial denture (per unit)	\$ 15.00

**Endodontics** **member pays**

D3220	Therapeutic pulpotomy	\$ 40.00
D3221	Pulpal debridement, primary and permanent teeth	\$110.00
D3310	Root canal therapy—anterior (excluding final restoration)	\$150.00
D3320	Root canal therapy—bicuspid (excluding final restoration)	\$250.00
D3330	Root canal therapy—molar (excluding final restoration)	\$300.00
D3410	Apicoectomy/periradicular surgery—anterior	\$150.00

**Periodontics (gum treatment)** **member pays**

D4210	Gingivectomy/gingivoplasty per quadrant	\$150.00
D4211	Gingivectomy/gingivoplasty per tooth	\$ 45.00
D4341	Periodontal scaling and root planing, per quadrant	\$ 55.00
D4342	Periodontal scaling and root planing 1 to 3 teeth per quadrant	\$ 55.00
D4355	Full mouth debridement to enable comprehensive evaluation and diagnosis	\$ 50.00
D4381	Localized delivery of chemotherapeutic agents (per tooth)	\$ 50.00
D4910	Periodontal maintenance	\$ 55.00

**Prosthodontics** **member pays**

D5110	Complete denture—maxillary	\$325.00+lab
D5120	Complete denture—mandibular	\$325.00+lab
D5130	Immediate denture—maxillary	\$325.00+lab
D5140	Immediate denture—mandibular	\$325.00+lab
D5211	Maxillary partial denture—resin base	\$325.00+lab
D5212	Mandibular partial denture—resin base	\$325.00+lab
D5213	Maxillary partial denture—cast metal framework, resin denture bases	\$325.00+lab
D5214	Mandibular partial denture—cast metal framework, resin denture bases	\$325.00+lab
D5410	Adjust complete denture—maxillary	\$ 20.00
D5411	Adjust complete denture—mandibular	\$ 20.00
D5421	Adjust partial denture—maxillary	\$ 20.00
D5422	Adjust partial denture—mandibular	\$ 20.00

**Repairs to prosthetics** **member pays**

D5510	Repair broken complete denture base	\$20.00+lab
D5520	Replace missing or broken teeth—complete denture (each tooth)	\$20.00+lab
D5610	Repair resin denture base	\$20.00+lab
D5630	Repair or replace broken clasp	\$20.00+lab
D5640	Replace broken teeth—per tooth	\$20.00+lab
D5650	Add tooth to existing partial denture	\$35.00+lab
D5730	Reline complete maxillary denture (chairside)	\$ 55.00
D5731	Reline complete mandibular denture (chairside)	\$ 55.00
D5740	Reline maxillary partial denture (chairside)	\$ 55.00
D5741	Reline mandibular partial denture (chairside)	\$ 55.00
D5750	Reline complete maxillary denture (laboratory)	\$40.00+lab
D5751	Reline complete mandibular denture (laboratory)	\$40.00+lab
D5760	Reline maxillary partial denture (laboratory)	\$40.00+lab
D5761	Reline mandibular partial denture (laboratory)	\$40.00+lab
D5850	Tissue conditioning—maxillary	\$ 35.00
D5851	Tissue conditioning—mandibular	\$ 35.00

**Extractions/oral and maxillofacial surgery** **member pays**

D7111	Coronal remnants, deciduous tooth	\$ 25.00
D7140	Extraction, erupted tooth or exposed tooth	\$ 25.00
D7210	Surgical removal of erupted tooth	\$ 45.00
D7220	Removal of impacted tooth—soft tissue	\$ 60.00
D7230	Removal of impacted tooth—partially bony	\$ 80.00
D7240	Removal of impacted tooth—completely bony	\$100.00

D7250	Surgical removal of residual tooth roots	\$ 45.00
D7310	Alveoplasty in conjunction with extractions—per quadrant	\$ 45.00
D7311	Alveoplasty in conjunction with extractions—one to three teeth or tooth spaces, per quadrant	\$ 45.00
D7320	Alveoplasty not in conjunction with extractions—per quadrant	\$ 80.00
D7321	Alveoplasty not in conjunction with extractions—one to three teeth or tooth spaces, per quadrant	\$ 80.00
D7510	Incision and drainage of abscess—intraoral	\$ 30.00

**Anesthesia** **member pays**

D9215	Local anesthesia	no charge
D9230	Analgesia (nitrous oxide), per 15 minutes	\$ 20.00

**Adjunctive general services** **member pays**

D9450	Case presentation, detailed and extensive treatment planning	no charge
D9951	Occlusal adjustment—limited	\$ 30.00
D9952	Occlusal adjustment—complete	\$175.00

**Orthodontics** **member pays**

NOTE: Employees can receive a 25 percent savings by visiting an in-network orthodontists.

# **How to Find a Humana DHMO Dental Provider**

**Step 1: Go to [humana.com](http://humana.com)**

**Step 2: Scroll Down to Find a Doctor or Pharmacy and hit Search**

**Step 3: Select Find a Dentist under Search Type...hit Go**

**Step 4: Coverage Type DHMO**

**Step 5: Enter Zip Code**

**Step 6: Network- Select HDC250**

**Step 7: Search- ALL and type All Dental Specialties...SEARCH**

**Step 8: Verify with selected Provider that they are taking new patients for the DHMO C250 Humana Dental Plan**

# MyHumana

## Your secure member account



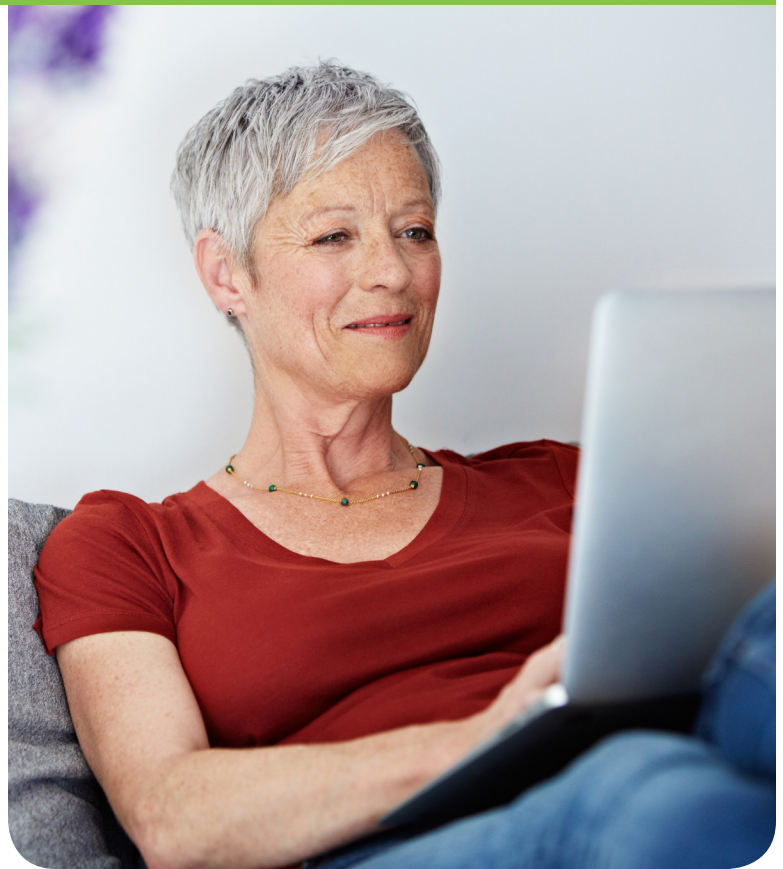
**MyHumana** is a secure and personalized account that lets you view your plan information online in one place, anytime you want.

### With MyHumana, you can:

- View your plan details
- Choose how you want to get your plan information: online or in print
- See your latest claims, status and other details
- Find in-network providers, hospitals, pharmacies and urgent care centers
- Give a family member access to your health information
- Update your contact information

### Registering is easy

- Have your Humana member ID or Social Security number available
- Go to **Humana.com/registration**
- Click “Get Started”
- Fill in some basic information and click “continue”
- Create a username, password and security prompt and click “continue” to finish



**Register today!**  
**Humana.com/registration**

### We go where you go!

Do you have a smartphone?  
Download the free  
MyHumana Mobile app!

**Humana.com/mobile**

Text and data rates may apply.



# Humana®





# MyHumana Mobile app

## Access your health information anytime, anywhere

Whether you prefer downloading a mobile application, using your mobile device or receiving text messages, you have the ability to manage your healthcare needs virtually anywhere, anytime.

### Use the MyHumana Mobile app and website to:

- View medical, dental, vision and pharmacy claims
- View and fax medical, dental and pharmacy ID cards
- View your plans and coverage details
- View your HumanaVitality® Dashboard†
- Receive medication reminders
- Research drug prices
- Locate providers in your network
- Refill your Humana Pharmacy™ prescriptions

### Download the Mobile App:

Download the MyHumana Mobile app from your app store. Search “MyHumana” in the Google Play or App Store.



### From your mobile device's browser:

You can visit MyHumana from your mobile device's browser. To get started, go to **Humana.com** and sign in.

### Text message alerts\*

#### On the MyHumana Mobile app:

1. Register or sign in (have your Humana ID or Social Security number available)
2. Click on the “Menu” icon
3. Select “Text Alerts”
4. Register and verify your mobile #
5. Select the alerts you want to receive

†Available to HumanaVitality members only.

\*Message and data rates may apply.

#### On Humana.com:

1. Register or sign in (have your Humana ID or Social Security number available)
2. Click on “Account settings & preferences”
3. Select “Edit your preferences”
4. Select “Mobile” from the tab
5. Register and verify your mobile #
6. Select the alerts you want to receive

**Humana**®

[Humana.com](https://www.humana.com)

## Discrimination is against the law

Humana Inc. and its subsidiaries comply with applicable federal civil rights laws and do not discriminate on the basis of race, color, national origin, age, disability, or sex. Humana Inc. and its subsidiaries do not exclude people or treat them differently because of race, color, national origin, age, disability or sex.

Humana Inc. and its subsidiaries provide free auxiliary aids and services, such as qualified sign language interpreters, video remote interpretation, and written information in other formats to people with disabilities when such auxiliary aids and services are necessary to ensure an equal opportunity to participate, in addition to free language services to people whose primary language is not English when those services are necessary to provide meaningful access, such as translated documents or oral interpretation.

If you need these services, call the number on your ID card (TTY: 711) or email [accessibility@humana.com](mailto:accessibility@humana.com).

If you believe that Humana Inc. and its subsidiaries have failed to provide these services or discriminated in another way on the basis of race, color, national origin, age, disability or sex, you can file a grievance with Civil Rights/LEP/ADA/Section 1557 Compliance Officer, 500 W. Main Street -10th floor, Louisville, Kentucky 40202

If you need help filing a grievance, call the number on your ID card or if you use a TTY, call 711.

You can also file a civil rights complaint with the **U.S. Department of Health and Human Services**, Office for Civil Rights electronically through the Office for Civil Rights Complaint Portal, available at <https://ocrportal.hhs.gov/ocr/portal/lobby.jsf>, or by mail or phone at **U.S. Department of Health and Human Services**, 200 Independence Avenue, SW, Room 509F, HHH Building, Washington, D.C. 20201, **1-800-368-1019**, **800-537-7697 (TDD)**.

Complaint forms are available at <http://www.hhs.gov/ocr/office/file/index.html>

## Multi-Language Interpreter Services

ATTENTION: If you do not speak English, language assistance services, free of charge, are available to you. Call the number on your ID card (TTY: 711)... ATENCIÓN: si habla español, tiene a su disposición servicios gratuitos de asistencia lingüística. Llame al número que figura en su tarjeta de identificación (TTY: 711)... 注意：如果您使用繁體中文，您可以免費獲得語言援助服務。請致電會員卡上的電話號碼 (TTY: 711)... CHÚ Ý: Nếu bạn nói Tiếng Việt, có các dịch vụ hỗ trợ ngôn ngữ miễn phí dành cho bạn. Gọi số điện thoại ghi trên thẻ ID của quý vị (TTY: 711)... 주의 : 한국어를 사용하시는 경우 , 언어 지원 서비스를 무료로 이용하실 수 있습니다 . ID 카드에 적혀 있는 번호로 전화해 주십시오 (TTY: 711)... PAUNAWA: Kung nagsasalita ka ng Tagalog, maaari kang gumamit ng mga serbisyo ng tulong sa wika nang walang bayad. Tawagan ang numero na nasa iyong ID card (TTY: 711)... ВНИМАНИЕ: Если вы говорите на русском языке, то вам доступны бесплатные услуги перевода. Наберите номер, указанный на вашей карточке-удостоверении телетайп: (711)... ATANSYON: Si w pale Kreyòl Ayisyen, gen sèvis èd pou lang ki disponib gratis pou ou. Rele nimewo ki sou kat idantite manm ou (TTY: 711)... ATTENTION: Si vous parlez français, des services d'aide linguistique vous sont proposés gratuitement. Appelez le numéro figurant sur votre carte de membre (ATS: 711)... UWAGA: Jezeli mówisz po polsku, możesz skorzystać z bezpłatnej pomocy językowej. Proszę zadzwonić pod numer podany na karcie identyfikacyjnej (TTY: 711)... ATENÇÃO: Se fala português, encontram-se disponíveis serviços linguísticos, grátis. Ligue para o número presente em seu cartão de identificação (TTY: 711)... ATTENZIONE: In caso la lingua parlata sia l'italiano, sono disponibili servizi di assistenza linguistica gratuiti. Chiamare il numero che appare sulla tessera identificativa (TTY: 711)... ACHTUNG: Wenn Sie Deutsch sprechen, stehen Ihnen kostenlos sprachliche Hilfsdienstleistungen zur Verfügung. Wählen Sie die Nummer, die sich auf Ihrer Versicherungskarte befindet (TTY: 711)... 注意事項：日本語を話される場合、無料の言語支援をご利用いただけます。お手持ちのIDカードに記載されている電話番号までご連絡ください (TTY: 711)...

توجه: اگر بہ زبان فارسی گفتگو می کنید، تسهیلات زبانی بصورت رایگان برای شما فراهم می باشد.  
با شماره تلفن روی کارت شناسایی تان تماس بگیرید (TTY: 711)...

Díí baa akó nínízin: Díí saad bee yáníłti'go Diné Bizaad, saad bee áká'ánída'áwo'déé', t'áá jiik'eh, éí ná hólq, námboo ninaaltsoos yézhí, bee néé ho'dólzín bikáá'ígíí bee hólne' (TTY: 711)...

ملحوظة: إذا كنت تتحدث اذكر اللغة، فإن خدمات المساعدة اللغوية تتوافر لك بالمجان. اتصل برقم الهاتف الموجود على بطاقة الهوية الخاصة بك (TTY: 711).